



Good for the fleet, even better for business.

Mercedes-Benz ServiceSolutions are customized to fit your needs.



Mercedes-Benz  
Trucks you can trust







## Introduction.

No matter what you are carrying or what sector of industry you are in, the primary purpose of your truck is to earn money. There are many reasons why a service contract from **GD name** can make this easier for you, such as attractive, fixed maintenance and repair costs, reduced vehicle downtime and reduced administration.

# Mercedes-Benz ServiceSolutions: the economical and reliable way to keep your vehicles on the road.

Mercedes-Benz ServiceSolutions: more value, lower costs.

Our ServiceSolutions are modular, which means that whether you have a fleet of long distance haulage or single vehicles doing local distribution, we always have the right combination of service modules to meet your particular requirements.

Our ServiceSolutions come with a variety of add-ons that also give you the opportunity to customize our service offering to your operational requirements. This brochure sets out the comprehensive services and benefits of the Mercedes-Benz ServiceSolutions. For more information and a detailed solution tailored to your specific needs, please contact your Mercedes-Benz partner. They will be delighted to advise you in person.



|                               | Best Maintenance<br> | Select Plus<br> | Complete<br> |
|-------------------------------|---|--|---|
| Scheduled maintenance         | ●   | ●  | ●   |
| Post-warranty cost protection |   | ●  | ●   |
| Wearing parts                 |   |  | ●   |
| Maximum mileage               | ∞   | 450 t.km   | 600 t.km  |
| Maximum duration              | 48 Months   | 48 Months  | 60 Months   |



# ServiceSolutions that meet your own specific requirements.

Mercedes-Benz ServiceSolutions: more benefits, less hassle.



## BestMaintenance

Transparent and plannable maintenance costs.

BestMaintenance includes all scheduled maintenance work for your vehicle as specified by Mercedes-Benz. It covers your routine service operations like engine oil and filter change, air filter replacement, gearbox oil change and so on.



## SelectPlus

Convenient maintenance and extensive protection against unexpected costs.

The Select Plus service solution includes post-warranty cost protection for your vehicles and all the scheduled maintenance work as specified by the manufacturer. Purchasing these services as a bundle is less expensive than purchasing them individually, which means more repair service for less cost.



## Complete

A complete service solution for utter peace of mind.

The Complete ServiceSolution combines scheduled maintenance, wear & tear components and a post-warranty cost protection. This attractive package gives you the maximum level of cost control through a fixed monthly rate.

### Description

Actros 2040 S 4X23 years/  
450,000 km

XXX cent/km XXX/month

XXX cent/km XXX/month

XXX cent/km XXX/month

Actros 3848 S 6X43 years/  
250,000 km

XXX cent/km XXX/month

XXX cent/km XXX/month

XXX cent/km XXX/month

Actros 4140 B 8X4

XXX cent/km XXX/month

XXX cent/km XXX/month

XXX cent/km XXX/month

The above are sample prices for various models. For a tailored quotation, that will fulfill your operational requirements, please contact [GD name](#), and take advantage of our best service contract offers!

# Our product range for you.

Mercedes-Benz ServiceSolutions offers you a customized range of services at a fixed, transparent, low price. That protects the resale value of your vehicles, reduces downtime and improves economic efficiency.

|                               |  <b>Best Maintenance</b> |  <b>Select Plus</b> |  <b>Complete</b> |
|-------------------------------|---|--|---|
| Scheduled maintenance         | ●   | ●  | ●   |
| Post-warranty cost protection |   | ●  | ●   |
| Wearing parts                 |   |  | ●   |

## + Add-Ons

|   |   |
|---|---|
| Discount on repairs not covered by the contract | We will offer you our best price for any other services your vehicles might need.   |
| Service24h                                      | Roadside assistance in case of breakdown for any vehicle included in the contract. (Limited at one intervention/year for BestMaintenance).  |
| Driver training                                 | Your drivers will receive yearly training on how to correctly operate the vehicles. Free of charge for Complete and SelectPlus, at a special rate for BestMaintenance.  |
| FleetBoard                                      | Benefit from free FleetBoard services with the Complete service solution. Add FleetBoard to any other Service Solution starting from XXX/month.   |
| Extended opening hours                          | For your convenience we can arrange to have your vehicles serviced outside our normal working hours. Please contact your Mercedes-Benz partner for a partner for a personalized quotation. (starting from XXX/month). |
| On site technical support                       | If needed, we can send our technical team to support you on site, on a weekly or monthly basis. Please contact your Mercedes-Benz partner for a personalized quotation. (starting from XXX/ month).                   |
| Legal inspections                               | You can count on our support in getting your vehicles ready for the yearly inspections.   |
| Superstructure repairs                          | We can support you with the service & repair operations required for the additional equipment fitted on your vehicles.  |



13

# FleetBoard Vehicle Management:

## Greater transparency means greater efficiency.

The telematics-supported Internet services provided by FleetBoard allow fleet managers to ensure that their vehicles are operating in a cost-effective manner, whilst also helping to optimize the fleet's operational excellence and achieve fuel savings up to 15%.

With cost pressures in region increasing and more stringent safety requirements arising it is vital to remain competitive. More than ever before it is necessary to handle fleets in a cost optimized manner, to control them transparently, and to manage the vehicles efficiently. FleetBoard gives you this optimal control of your fleet – be it long, medium or short distance operation. It is one of the best ways of boosting profitability on the road, every single day. The Vehicle Management modular services available, which can also be integrated into a company's existing IT infrastructure, help to manage the daily operations and also ensure correct application and usage of the vehicle technology.

Get the most out of your complete service solution by adding FleetBoard and driver training.

### Your benefits at a glance:

#### FleetBoard

Optimum Fleet Management with FleetBoard.

- Full transparency on vehicle tracking incl. fuel level, speed, location.
- Concise and informative monthly reports to simplify use of FleetBoard data.
- Maintain higher level of road safety and reduced traffic accidents.
- Optimize operational efficiency for job scheduling and daily tasks.
- Monitor application of vehicle technology to ensure the correct usage.

#### + Driver training

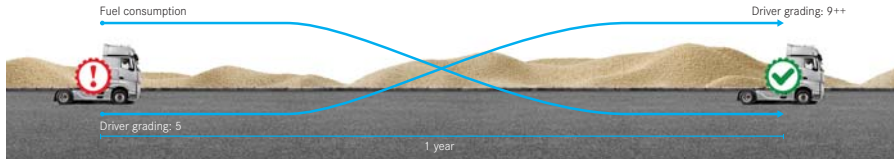
The driver is your most important asset.

- Motivate your drivers by encouraging driver training and development.
- Decrease fuel consumption (up to 15 %) with the help of detailed performance analysis.
- Less wear and tear due to preventive driving style.
- Motivate drivers to top performance.

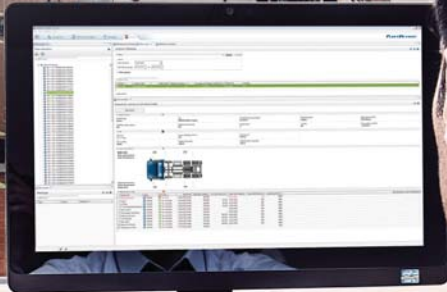
#### + Complete

A complete Service Solution, total piece of mind.

- Remote telediagnosics to reduce vehicle downtime with pro-active fault codes detection.
- Reduce maintenance costs by extending service periods and increasing uptime.
- Reduced costs for wear and tear items such as brake and clutch components.
- Benefit from a **XX%** discount on FleetBoard hardware with our Complete Service Solution.







# Mercedes-Benz ServiceSolutions: always tailored, always fitting.

## ServiceSolutions offer more value at lower costs

### Lower cost of ownership

Increased vehicle resale value.

Lower Service & Repair costs.

### Increased reliability

Lower downtime due to optimized servicing intervals & less breakdowns.

### Better performance

The truck is maintained at the highest standards so it is delivering the best performance.

#### OTHER BENEFITS:

Cost transparency

Protection against  
cost increase

Even distribution  
of costs

Peace of mind

More focus on your core business

With our **ServiceSolutions**, all necessary operations are performed by highly qualified technicians using only the best spare parts available, **Mercedes-Benz GenuineParts**. This ensures that the truck is operating at its optimum performance for a long period of time.



### Increased vehicle resale value

---

Your purchase pays off from the first until the last day. When you decide to sell your truck, our service solutions will help you get a better price for it:

- Service history and complete maintenance are guaranteed by Mercedes-Benz for the next owner.
- Included services were performed by properly trained Mercedes-Benz technicians.
- Only Mercedes-Benz Genuine Parts are used.

### Lower Service & Repair costs

---

Our ServiceSolutions are calculated using our best offering in terms of parts, labor or lubricants pricing. This ensures you will receive the best possible care for your vehicles at the lowest possible cost.

### Transparency

---

ServiceSolutions give you the opportunity to know exactly how much the service maintenance of your vehicle will cost over the next years.

### Fixed costs

---

You don't have to worry about the impact of inflation on your service & repair costs since you have fixed what you pay in advance.

